

GIFFORD ART GROUP

**Do you like to draw or paint
and experiment?**

Would you like to join an
enthusiastic and friendly group?

All welcome - enthusiastic beginners
or seasoned professionals!

*Open to
new members*

We meet in
Gifford Village Hall on
Tuesdays from 9.30-12.15.

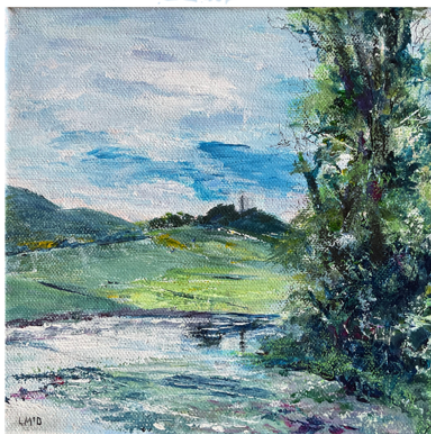
Our next 10 week terms begin on
23 September 2025
20 January and 14 April 2026



Join us to enjoy ...

... demonstrations and workshops by
practising local artists;
sessions led by our members;
meet ups where we concentrate
on our own work.

In June, we have our annual exhibition in the
Village Hall where we can display
and offer our work for sale.



To find out more and enquire about membership
visit our website www.giffordartgroup.uk